

REGIONAL TRANSIT ISSUE PAPER

Agenda Item No.	Board Meeting Date	Open/Closed Session	Information/Action Item	Issue Date
8	09/10/12	Open	Action	08/27/12

Subject: Approving Contract for Cosumnes River Boulevard Flyover Artwork Fabrication and Installation

ISSUE

Whether or not to award a contract for Cosumnes River Boulevard (CRB) Flyover Artwork Fabrication and Installation on the South Sacramento Corridor Phase 2 Project with Nonstop, Inc.

RECOMMENDED ACTION

Adopt Resolution No. 12-09-_____, Approving a Contract for CRB Flyover Artwork Fabrication and Installation on the South Sacramento Corridor Phase 2 Project with Nonstop, Inc.

FISCAL IMPACT

Budgeted:	Partially budgeted, see Discussion	This FY:	\$	17,685
Budget Source:	Capital	Next FY:	\$	80,564
Funding Source:	NewStarts/Prop 1B/MSA/STA/Developer Fees	Annualized:	\$	N/A
Cost Cntr/GL Acct(s) or Capital Project #:	410.08.03.01	Total Amount:	\$	98,249
Total Budget:	\$ 98,249			

DISCUSSION

The South Sacramento Corridor Phase 2 Project budget includes design, fabrication and installation of artwork at Franklin, Center Parkway, and Cosumnes River College Stations, and at the CRB Flyover. Proposed conceptual designs for all four of these artworks were presented to the Board at its January 23, 2012 meeting. At that time, the Board requested a presentation of the artwork final designs before staff enters into contracts for fabrication and installation of the artwork.

Final design of the CRB Flyover artwork is complete. The design concept for the CRB Flyover artwork has not changed since the previous presentation to the Board, however the artist has completed structural engineering and prepared a detailed budget and schedule. For the CRB Flyover, the artwork budget of \$56,000 (for design, fabrication and installation) was augmented by \$36,000 to reflect a shift of responsibility for the metal bridge railing from the Aerial Structures contractor to the artist. Additional budget shift of \$6,249 is needed from the Cosumnes River College Station artwork (by the same artist). The artist has also volunteered to forego half of his design fee in order to maximize the artistic possibilities of this particular artwork.

Approved:

Presented:

Final 09/04/12

General Manager/CEO

Senior Architect

J:\ISSUES\SSCP2\CRB Artwork Fab & Install.doc

Agenda Item No.	Board Meeting Date	Open/Closed Session	Information/Action Item	Issue Date
8	09/10/12	Open	Action	08/27/12

Subject: Approving Contract for Cosumnes River Boulevard Flyover Artwork Fabrication and Installation

The CRB Flyover construction is proceeding ahead of schedule. Staff would like to have the artist install the artwork railing base (which substitutes for the metal bridge railing) before the Aerial Structures contractor removes the falsework, estimated for late October, 2012. Fabrication and installation of the CRB Flyover artwork is covered under the Letter of No Prejudice (LONP) for the Aerial Structures, however, RT does not have sufficient funding at this time for the entire construction cost. The CRB Flyover artwork fabrication and installation contract therefore requires only the completion of the bridge guardrail at this time (representing \$17,685 of the cost).

RT has structured the Agreement with the Artist so that the work will be authorized through the issuance of multiple Notices to Proceed (NTP) and that RT's obligation to request the work related to the installation of the second portion of the scope of work is contingent on RT securing a Full Funding Grant Agreement (FFGA) with the Federal Transit Administration (FTA). RT will not issue an NTP for the remaining \$80,564 until there is sufficient funding available, and the Civil/Track/Systems/Stations contractor is within 9 months of completing the track and OCS pole installation on the CRB Flyover.

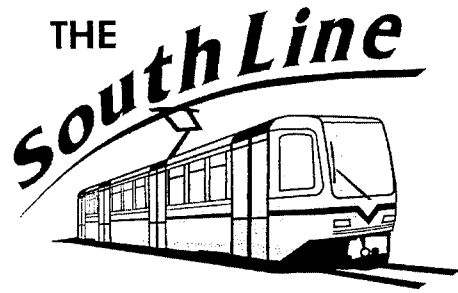
Final design of the three station artworks is still in progress and fabrication and installation of the station artworks will not be funded until RT secures a FFGA with the FTA. Therefore, presentation of the station artworks will be deferred to a later Board meeting.

Staff recommends Board approval of the Contract for Fabrication and Installation of CRB Flyover Artwork, in the amount of \$98,249.00, with Nonstop, Inc.

Attachments:

Power Point Presentation (Attachment 1)

Proposal for Fabrication and Installation of CRB Flyover Artwork (Attachment 2)



PHASE 2

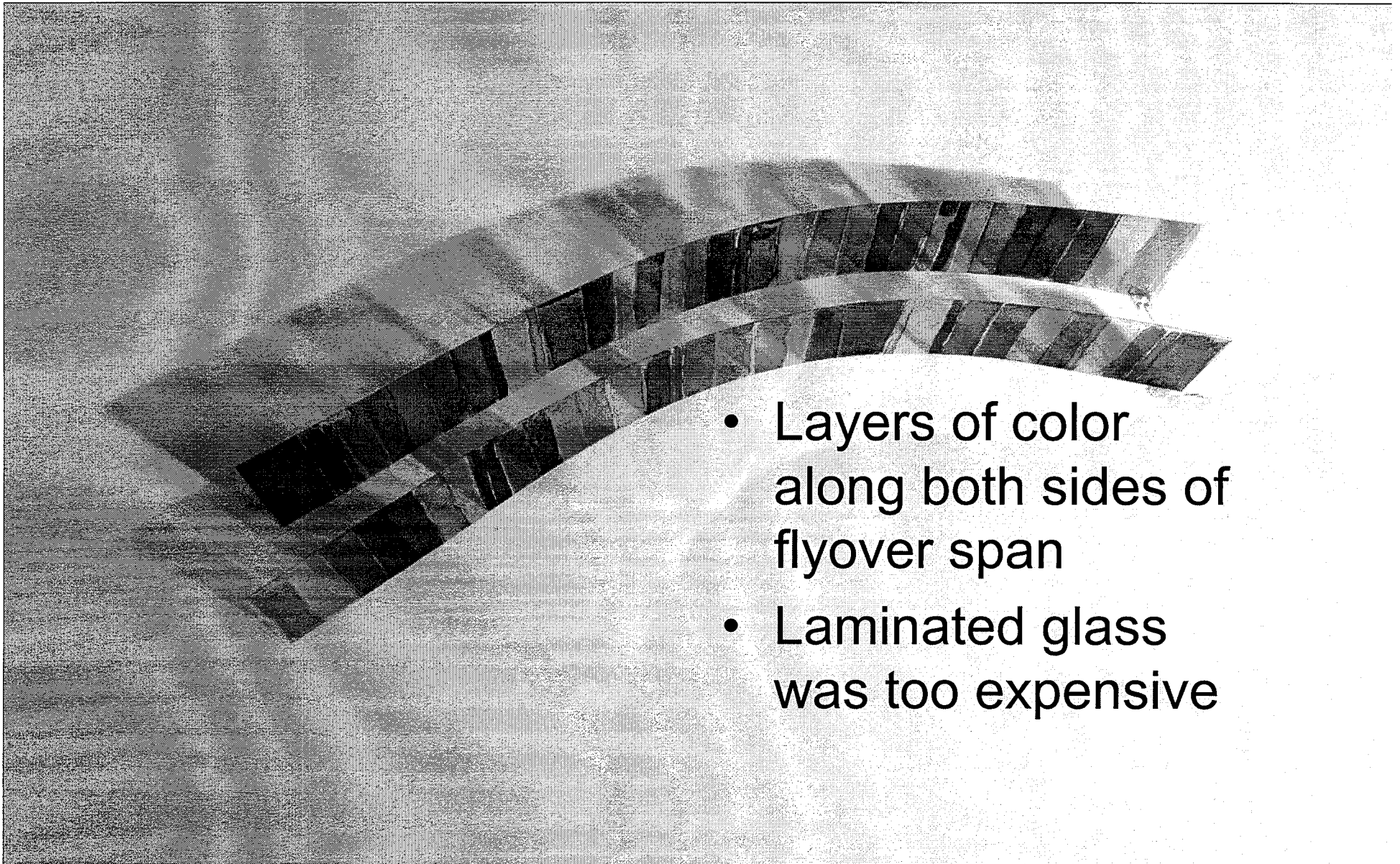
SOUTH SACRAMENTO CORRIDOR PHASE 2 PROJECT

Cosumnes River Blvd. Flyover Artwork Final Design Proposal

Cosumnes River Blvd. Flyover Artwork

By Mike Ross

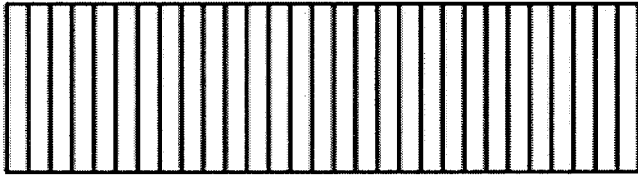
Original proposal



- Layers of color along both sides of flyover span
- Laminated glass was too expensive

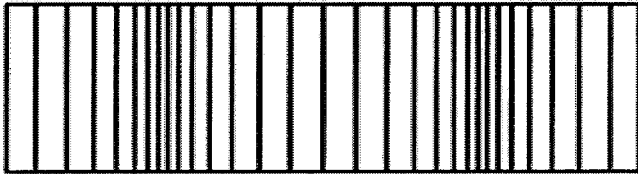
Revised proposal - idea

Fence

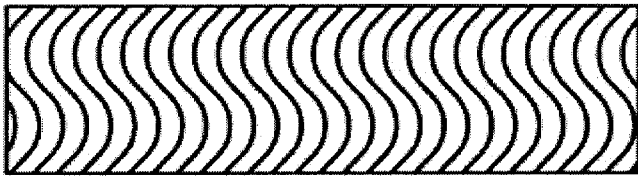


Vary:

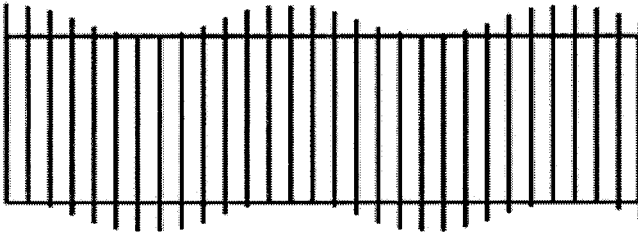
Spacing



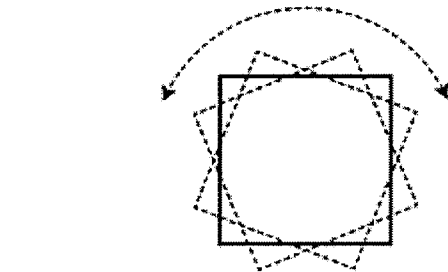
Shape



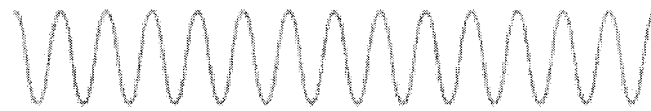
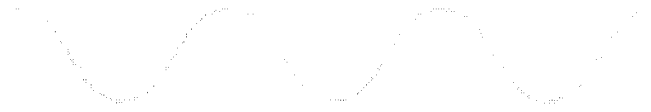
Height



Rotation

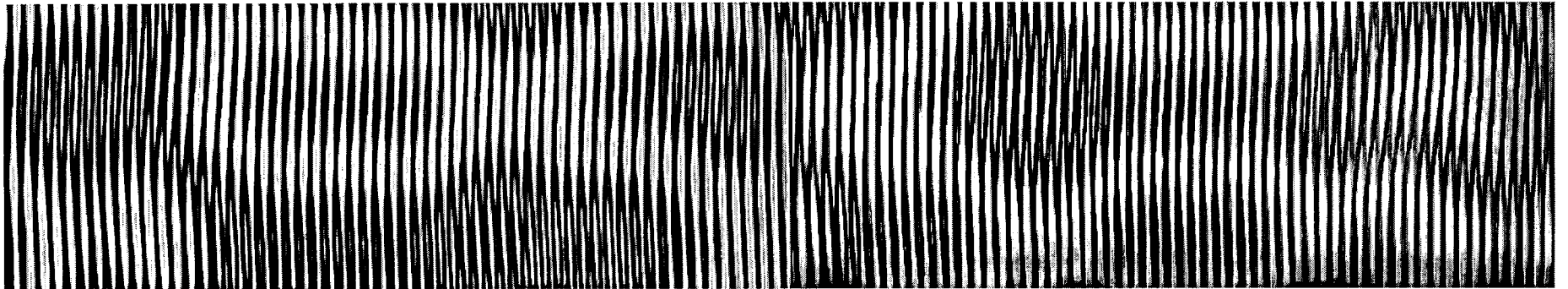


Color



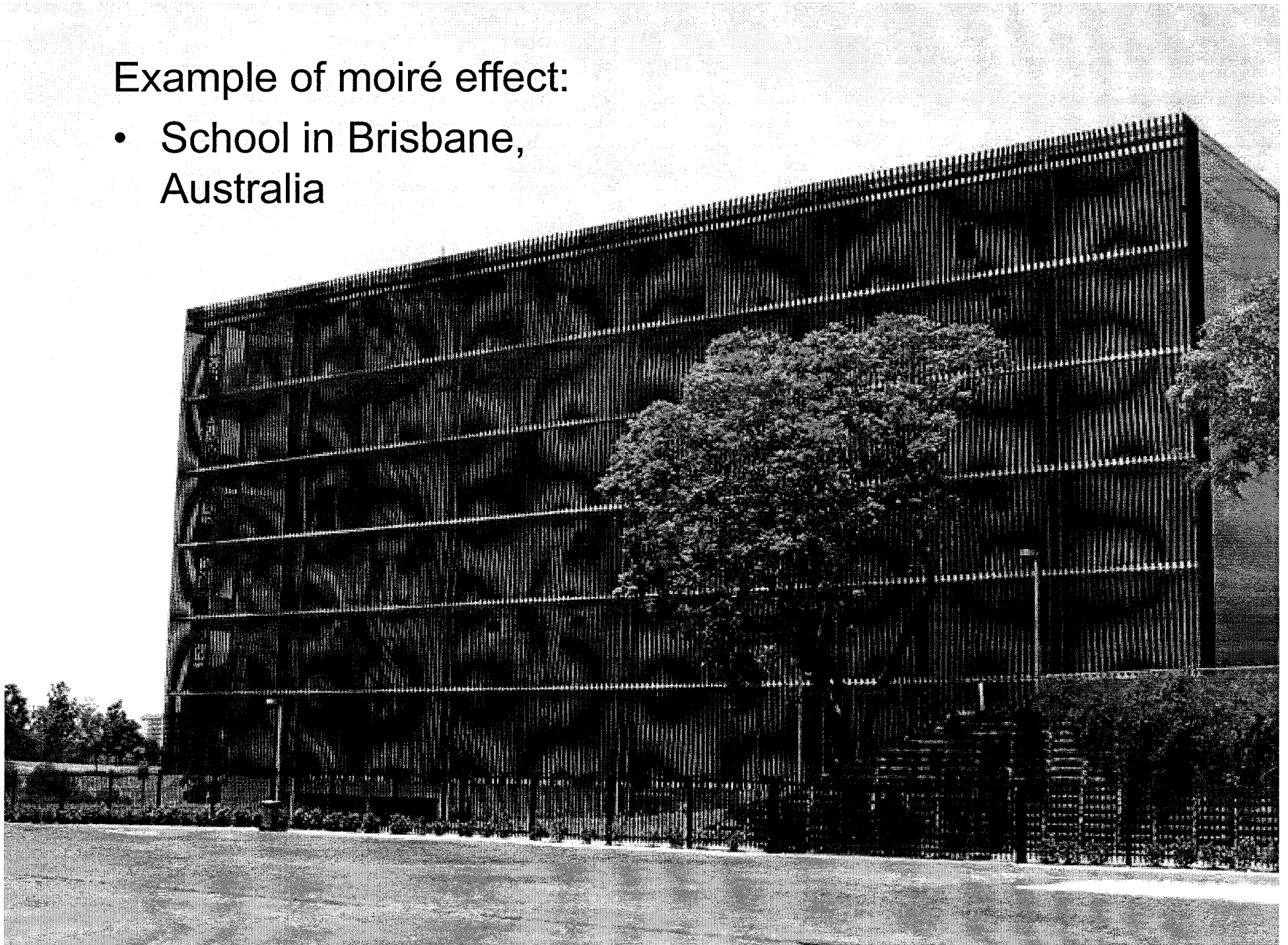
- Sine waves combined to generate patterns

- Combined patterns in two layers generate a moiré effect



Example of moiré effect:

- School in Brisbane, Australia



- 
- Fence on west side of flyover

- Art panel and Art Commission both unanimously recommended seeking additional funds to place artwork on the east side of the flyover as well.

CRB Flyover video

<http://vimeo.com/33637914>

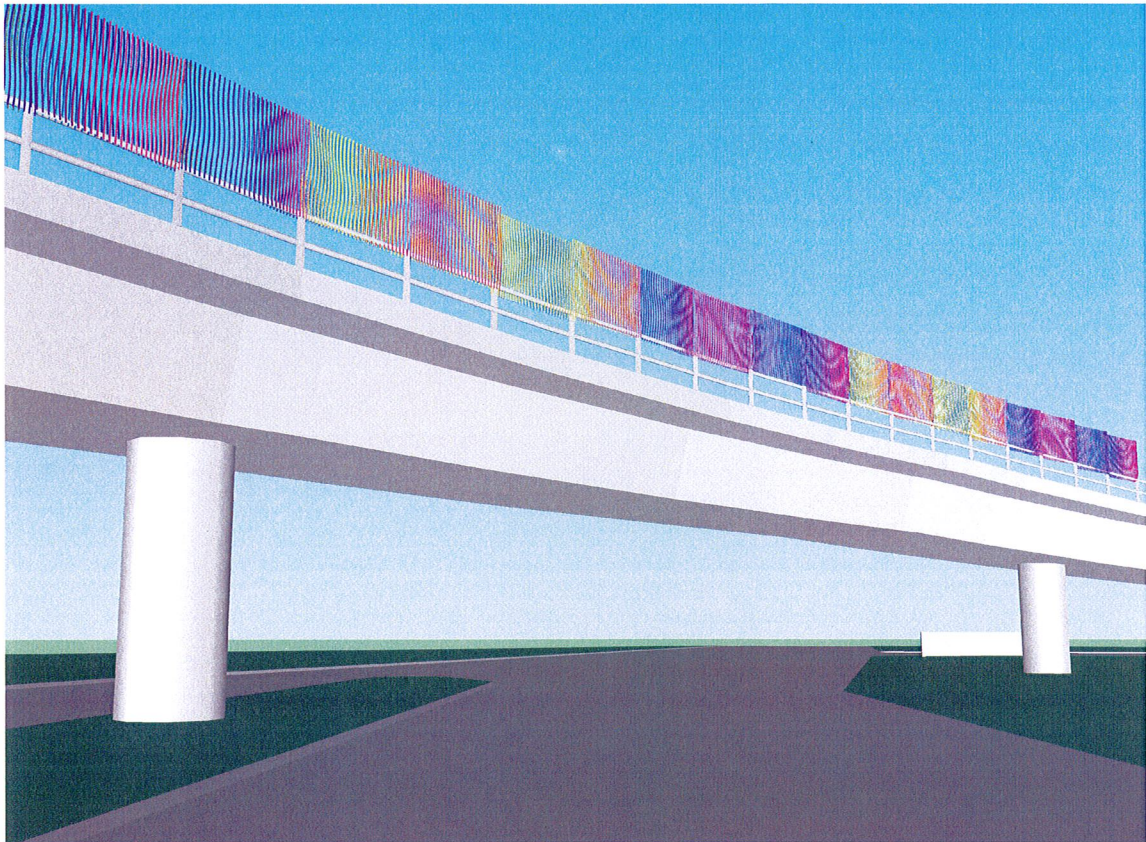
<http://vimeo.com/download/video:76948140?v=2&e=1324080524&h=42e66ce2d62baf38a1576c680cc1fd9&uh=0e212bea1017e77cd7939162075c35a0>

Moire Array
Proposal Package for Sacramento
CRB Flyover Artwork

Mike Ross
August 17, 2012

Artist Statement:

Moire Array is a perceptual experience created to be enjoyed by pedestrians and drivers below the flyover, as well as train passengers on passing trains. The sculpture uses a custom-designed moire pattern arranged in a 240' wall of colored steel. The moire effect creates undulating patterns and colors as viewers change position in relation to the sculpture

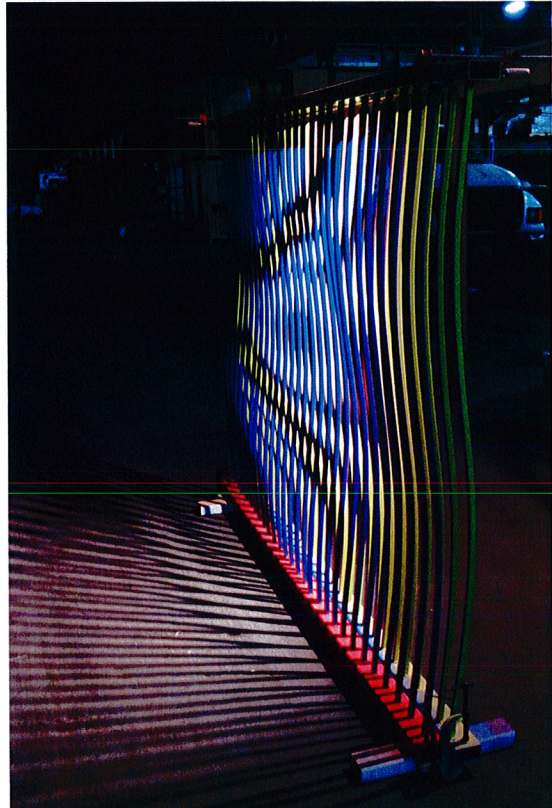
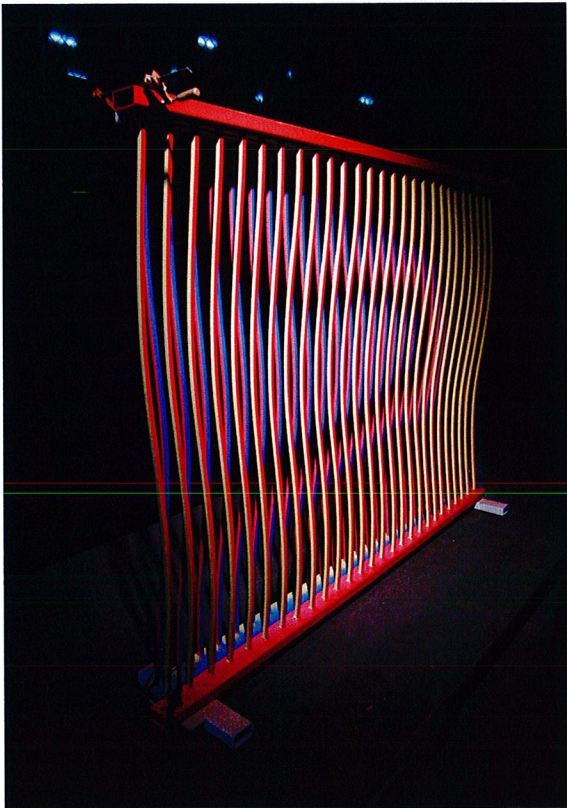


Rendered view of the sculpture



Photographs of full size model of a single panel from 3 positions

Video Documentation: <http://vimeo.com/39508986> (password="view")



Finish

The posts and guardrail beneath the sculpture will be galvanized by subcontractor.

The sculpture will be protected from weathering in compliance with Sacramento RT standard for Paint Coatings. An subcontractor will apply primer and epoxy and allow RT inspection as follows:

1st coat: Moisture Cure Urethane Zinc Rich Primer (UC65147/97-675) or equivalent

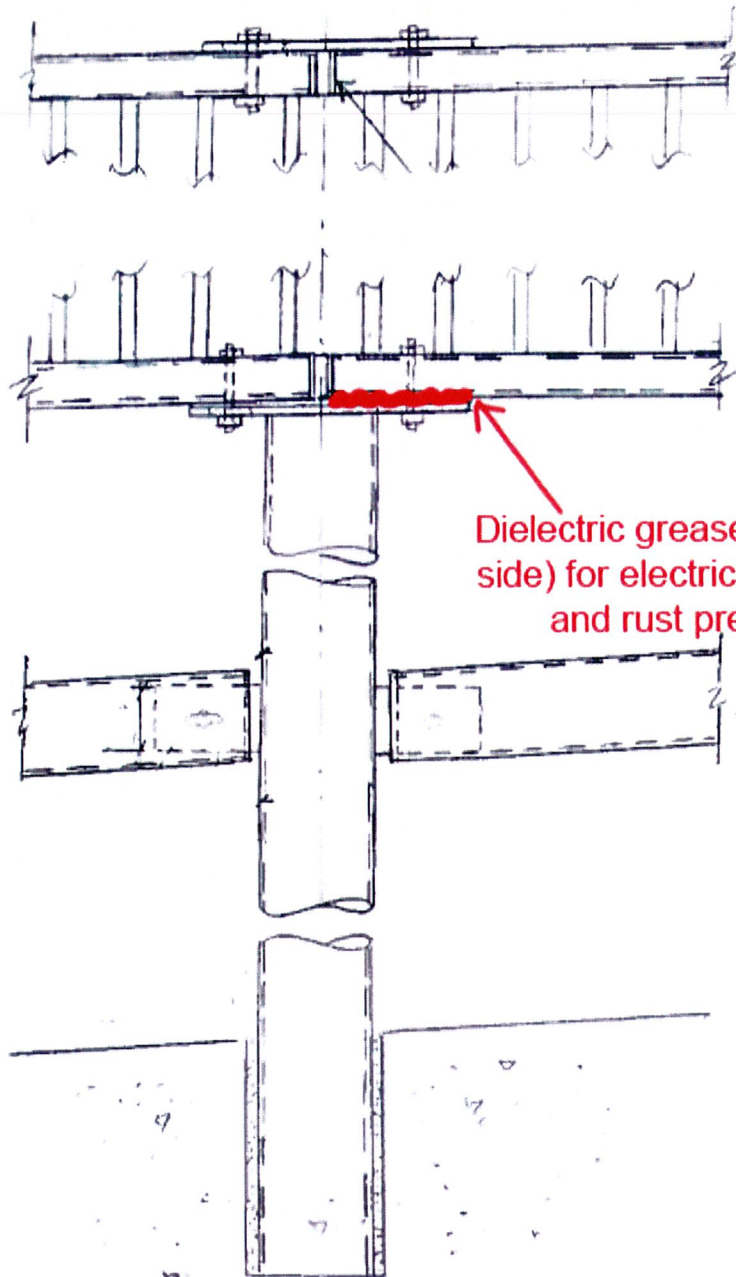
2nd coat: Epoxy (Pitt Guard Rapid Coat 95-245, Series 95-2412) or equivalent

The artist will apply the top coat coloring with Acrylic Aliphatic Urethane (Pitthane Ultra Gloss Verathane Enamel 95-812 Series or equivalent)

Grounding

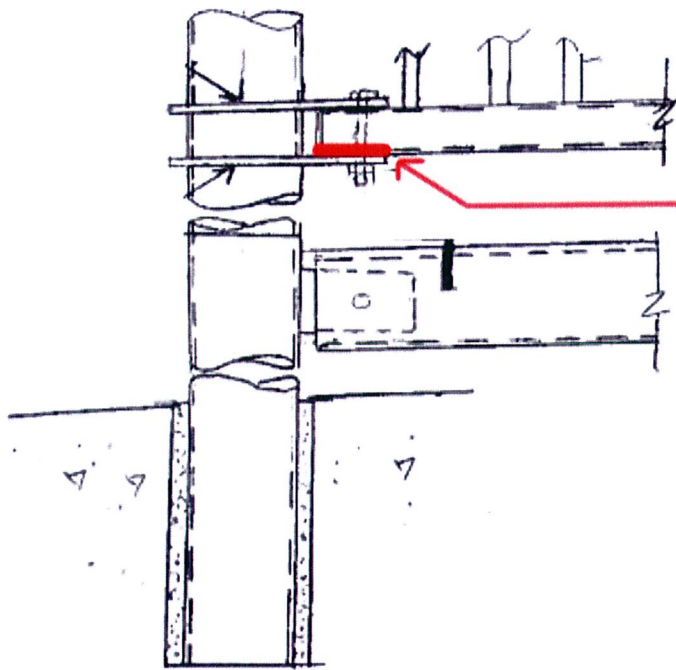
The posts and guardrail will be grounded by RT. The portion of the Moire Panel in contact with the non-slotted side of the post plate will be kept unpainted. NO-OX-ID-A-Special dielectric rust inhibiting grease will be applied on this section to ensure continuous ground to the plates (see supporting documentation for details).





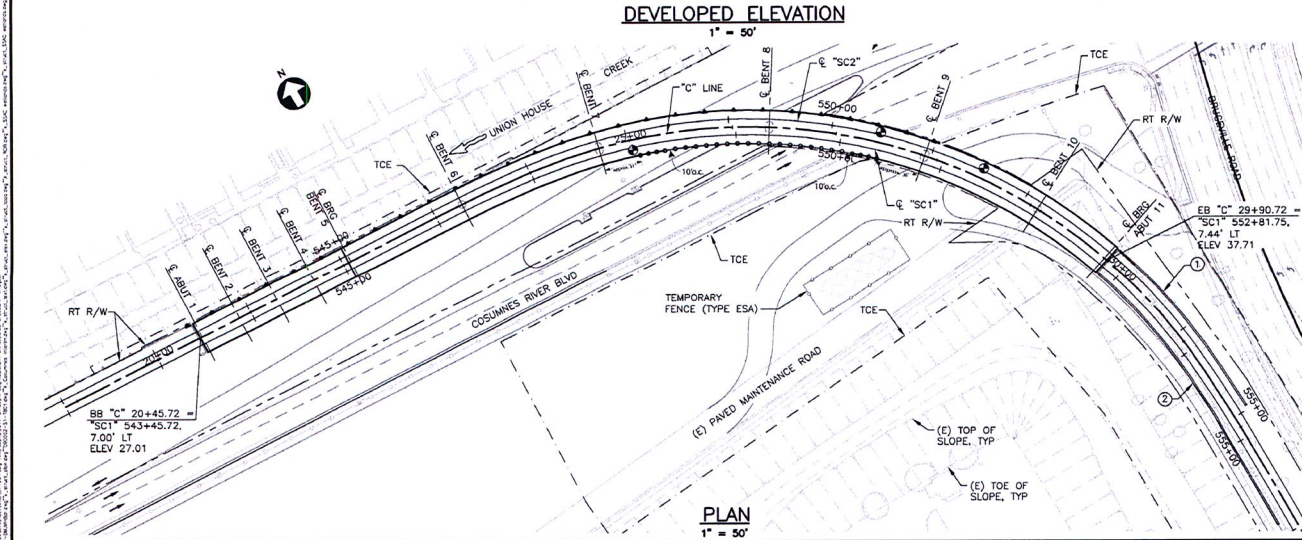
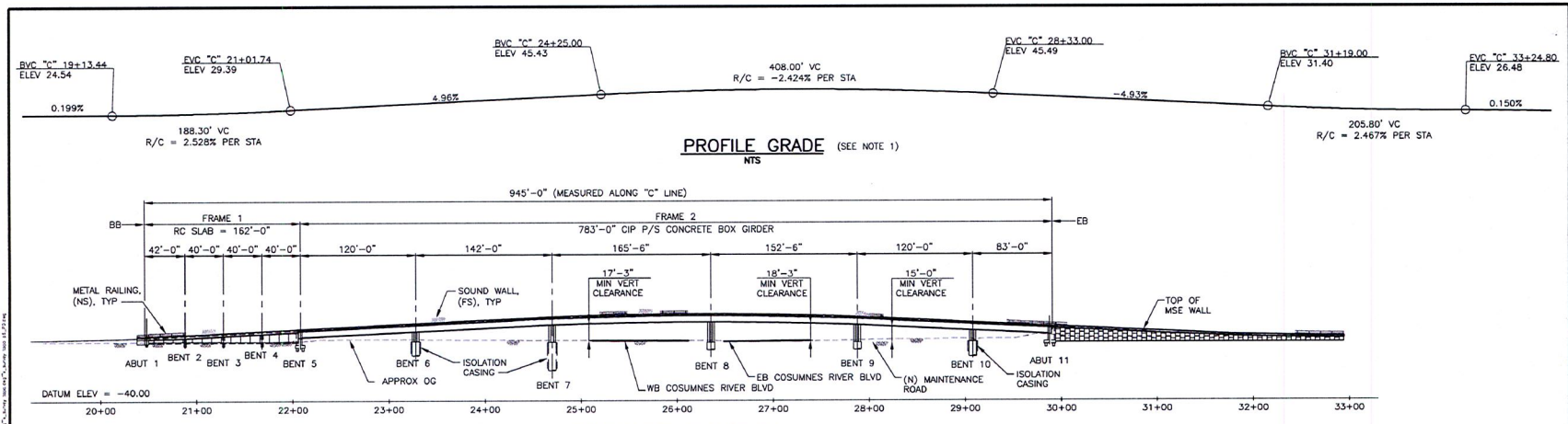
Dielectric grease (not slotted side) for electrical grounding and rust prevention

INTERIOR CONDITION DETAIL



Dielectric grease for
electrical grounding and
rust prevention

END DETAIL



- LEGEND:**
- POINT OF MINIMUM VERTICAL CLEARANCE
 - 5'-5" MASONRY BLOCK SOUND WALL
 - INDICATES NEW CONSTRUCTION
 - INDICATES EXISTING MSE RETAINING WALL 1
 - MSE RETAINING WALL 2
 - ENVIRONMENTALLY SENSITIVE AREA
 - SCULPTURE POSTS; SPACING = 10' ON CENTER
- NOTES:**
1. PROFILE GRADE LINE IS LAID OUT ALONG THE "C" LINE AND IS SET AT THE TOP OF DECK.
 2. FOR CURVE INFORMATION, LIMITS OF METAL RAILING, MSE WALL, AND SOUND WALL, SEE "STRUCTURE PLAN NO. 1 THRU NO. 3" SHEETS.
 3. FOR LOCATIONS OF OCS POLES AND DOWNGUYS, SEE "OCS POLE SUPPORT DETAILS NO. 2" SHEET.
 4. FOR GENERAL NOTES, SEE "GENERAL NOTES" SHEET.
 5. FOR PILE DATA TABLE, SEE "FOUNDATION PLAN NO. 1" SHEET.
 6. FOR INDEX TO PLANS, QUANTITIES, AND STANDARD PLANS LIST, SEE "INDEX TO PLANS" SHEET.
 7. FOR TYPICAL SECTIONS, SEE "STRUCTURE PLAN NO. 1 & NO. 2" SHEETS.
 8. FOR CORROSION CONTROL, SEE "CORROSION CONTROL" SHEETS.
 9. ALL STATIONS ARE ALONG "C" LINE UNLESS NOTED OTHERWISE.

REVISIONS				SCALE: VERTICAL: N/A	PROJECT ENGINEER: THOMAS R. BARNARD	DATE	CH:XXXXXX	FILE: ST-201.dwg	SUBMITTAL: FINAL	10/03/2011	SOUTH SACRAMENTO CORRIDOR PHASE 2 PROJECT	ST-201
MARK	DATE	DESCRIPTION	BY	CHKD	HORIZONTAL: AS SHOWN	DESIGNED BY: J. STATSER						
▲					ORIGINAL SCALE IN INCHES FOR REDUCED PLAN	DRAWN BY: E. CISNEROS					CRB FLYOVER GENERAL PLAN	SHEET
▲					0 1 2 3	CHECKED BY: J. FREIKING					MODIFIED: POST PLACEMENT FOR FLYOVER SCULPTURE BY MIKE ROSS	

AECOM

AECOM USA, Inc.
2025 L Street, Suite 300
Sacramento, CA 95811
T 916 414 5000 F 916 414 1557



Schedule

October 7-21, 2012: Fabrication of Posts and Guardrail

Late Oct/Early Nov, 2012: Installation of posts and Guardrail (1-2 days)

June, 2014: Installation of Sculpture (1 day, artist to be notified 9 months in advance)

Installation Narrative for Guard Rail

25 posts are delivered to site (2 end posts, and 23 regular posts), along with 24 intermediate guard rails. The posts are positioned in preinstalled sleeves and bolted to the guard rails, which aid alignment. High strength, non-shrink grout is poured into the sleeve to secure the posts in space. Bolts through slotted holes are tightened snug-tight. Grounding to be done separately by aerial contractor. Artist will be on site to assist in installation and to take measurements for use in fabrication of panels.

Equipment required: cart or other means of transporting posts, guard rails, grout and mixer across the bridge.

Installation Narrative for Sculpture

24 panels (10' x 6') are delivered to site. Heavy equipment from roadway or on bridge will be used to lift each panel into position on top of the guard rail posts. 4 bolts secure the panel to the posts. An additional 4 bolts and top plate are used to secure adjacent panels. Grounding

Equipment required: heavy equipment to transport panels (i.e., High Rail Crane/Grapple Truck). Each panel is secured with 8 bolts. Bolts tightened snug tight with permanent thread locker. Top exposed thread chisel-punched for redundant protection from unfastening.

NONSTOP, INC.

BUDGET FOR SACRAMENTO MOIRE ARRAY

	Quantity	UM	Cost.unit	Multiplier	Cost	Notes/Source
Fabrication						
Steel Materials						
Bent Steel Rods, 20' Ea.	480	EA	\$48.50	1.085	\$25,258.80	Quote: California Benders
Steel Plates	1	QU	\$1,250.00	1.085	\$1,356.25	Quote: H2O Precision Waterjet
Other Steel	1	EA	\$8,969.00	1.085	\$9,731.37	Quote: Alco
Hardware	150	EA	\$2.00	1.085	\$325.50	McMaster: 1/2x2.5 A325 Galvanized + Nut + 2x5/16 washer
Steel Fabrication						
In-house Steel Fabrication	24	EA	\$800.00	1.000	\$19,200.00	
Weld Inspection	1	QU	\$1,400.00	1.000	\$1,400.00	Quote: B. Sherman
						\$57,272
Finishwork						
Paint Materials						
Primer+Epoxy	1	EA	\$6,846.00	1.085	\$7,427.91	Quote: CSI Paint
Enamel Topcoat	1	EA	\$3,271.80	1.085	\$3,549.90	Quote: CSI Paint
Painting Tools and Misc.	1	EA	\$1,000.00	1.085	\$1,085.00	
Dialectric Grease	1	EA	\$50.00	1.085	\$54.25	
Labor and Subcontracting						
Subcontracted (Primer+Epoxy)	24	EA	\$200.00	1.000	\$4,800.00	Quote (includes inspection)
In-house Painting (Top Coats)	24	EA	\$100.00	1.000	\$2,400.00	
Galvanizing Posts/Guardrail	3300	LB	\$0.55	1.085	\$1,969.28	
						\$21,286
Delivery and Installation						
Delivery						
Ship Handrail	1	EA	\$600.00	1.000	\$600.00	
Ship Sculpture	1	EA	\$1,000.00	1.000	\$1,000.00	
Installation						
Install GuardRail	25	EA	\$250.00	1.000	\$6,250.00	Per Post Estimate: 2 installers @ \$100/hr * 45min + \$100 overhead
Install Sculpture	24	EA	\$500.00	1.000	\$12,000.00	Per Panel Estimate: 3 installers @ \$100/hr * 1hr + \$200 overhead
						\$19,850
Subtotal						\$98,408
Contingency			10.00%			\$9,841
TOTAL						\$108,249

Flyover Budget	56000	Total Design	
CRC Budget	56000	Contracts (Paid)	20,000
		Engineering	-6,000
CRC Redesign	4000	Design Fees	
		Logistics	-4,000
Guardrail Credit (240 Ft *150)	36000	Reallocated to	
Total Budget	152000	Fabrication	10,000
Design Fees Paid	-20000		
Total for Fab/Install Contracts	132000		
Budget for Flyover	108,249		
Reallocated Design Fees	-10000		
Flyover Fab/Install Contract	\$98,249		
CRC Fab/Install Contract	\$33,751		

NONSTOP, INC.

PAYMENT SCHEDULE FOR SACRAMENTO MOIRE ARRAY

On execution of the Contract for Fabrication and Installation	12%	\$11,789.88
On completion of guardrail installation	6%	\$5,894.94
Upon granting you 9 months notice for the sculpture panels	60%	\$58,949.40
On completion of sculpture installation	12%	\$11,789.88
Upon RT approval or at end of contract	10%	\$9,824.90
Total To Be Paid		\$98,249.00

RESOLUTION NO. 12-09-_____

Adopted by the Board of Directors of the Sacramento Regional Transit District on this date:

September 10, 2012

**APPROVING A CONTRACT FOR CRB FLYOVER ARTWORK FABRICATION AND
INSTALLATION ON THE SOUTH SACRAMENTO CORRIDOR PHASE 2 PROJECT
WITH NONSTOP, INC.**

BE IT HEREBY RESOLVED BY THE BOARD OF DIRECTORS OF THE
SACRAMENTO REGIONAL TRANSIT DISTRICT AS FOLLOWS:

THAT, the Contract for Cosumnes River Boulevard Flyover Artwork Fabrication and Installation on the South Sacramento Corridor Phase II Project between the Sacramento Regional Transit District, therein referred to as "RT," and Nonstop, Inc., therein referred to as "Artist," whereby Artist agrees to complete the fabrication and installation of the subject artwork for an amount not exceeding \$98,249.00, is hereby approved.

THAT, the General Manager/CEO is hereby authorized and directed to execute said Contract.

BONNIE PANNELL, Chair

A T T E S T:

MICHAEL R. WILEY, Secretary

By: _____
Cindy Brooks, Assistant Secretary